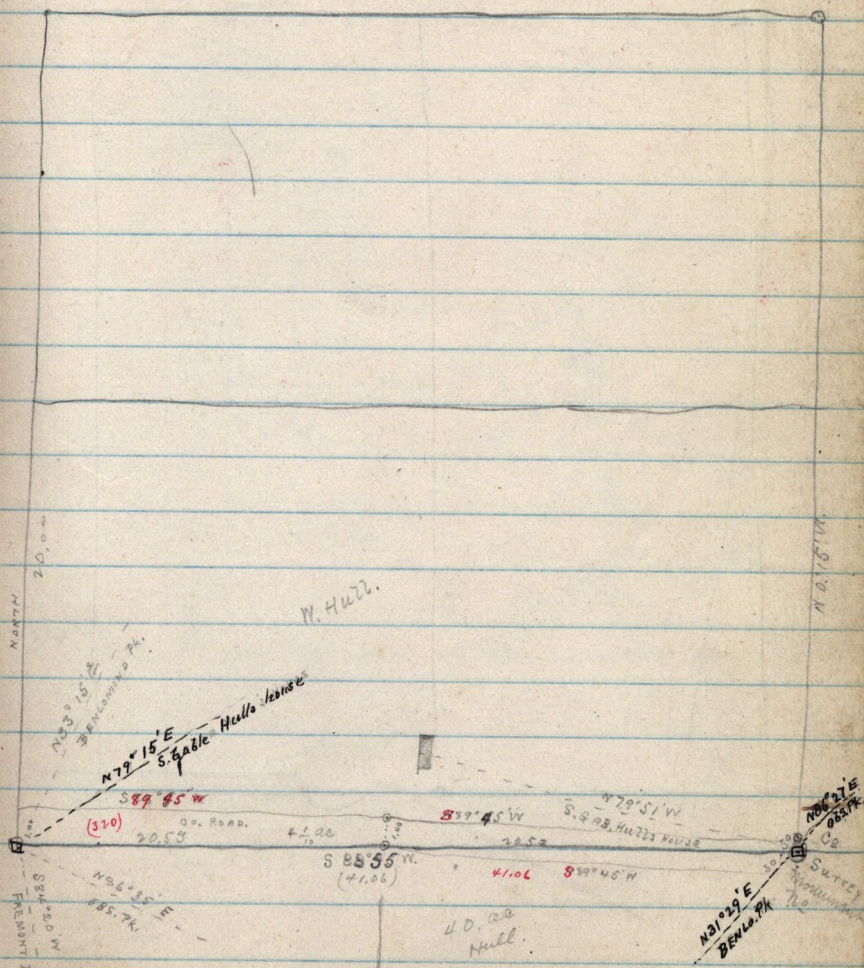


October 22 - 1885.

S. 1/4 of 1/4 Sec. 11th Hull.

S. E. 1/4 Sec. 6 T. 5 N. R. 2 W.



From the South East corner of Sec 6, the center of the County Road
 bears N 89° 45' E to Corns ville and also S 89° 45' W
 See Transit Notes Weber Co. Roads Book D. page 65 -